

02

## Carriage House: Quail Quarters

(1-Storey over 2-Car Garage) w/ Option for 3-Car & 1-Bed

- 936 sf (87 m<sup>2</sup>)  
+ 710sf Garage



(option 1-Bed  
& 3-Car)

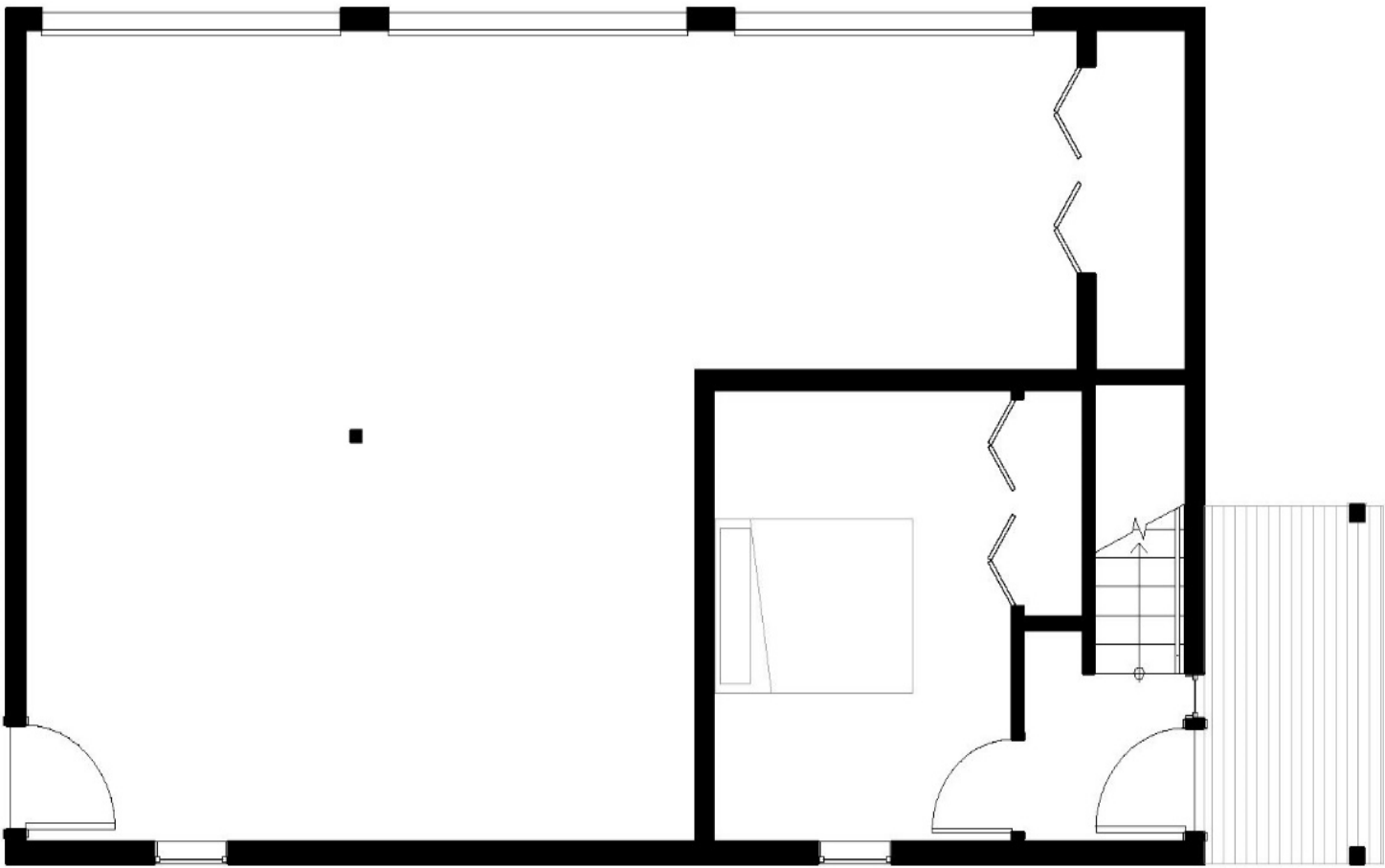




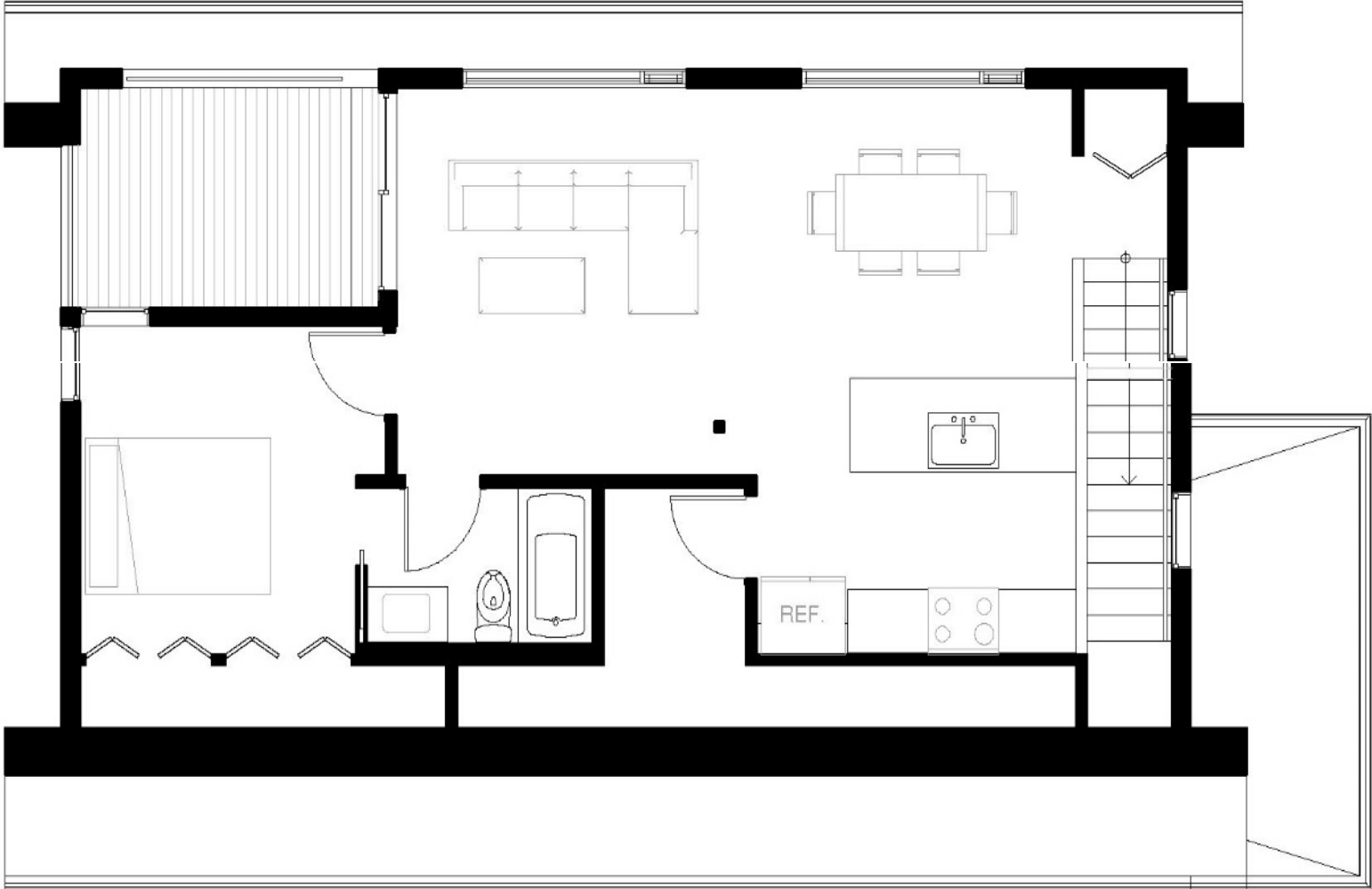
02

# Carriage House: Quail Quarters

(1-Storey over 2-Car Garage) w/ Option for 3-Car & 1-Bed



Ground Floor Plan



Upper Floor Plan